



MAMMOTH RESOURCES CORP.



Vuggy Silica Outcrop



Diamond Drill Core



Locally Panned Gold

TSXV: MTH / OTC: MMMRF

October 2024

Disclaimer / Qualified Person

Investors are cautioned that, except for statements of historical fact, certain information contained in this document includes forward-looking information. Such information is based on current expectations, estimates and projections formulated using assumptions believed to be reasonable and involving a number of risks and uncertainties which could cause actual results to differ materially from those anticipated. Such factors include, without limitation, fluctuations in foreign exchange markets, the price of commodities in both the cash market and futures market, changes in legislation, taxation, controls and regulations of national and local governments and political and economic developments in countries where the Mammoth Resources Corp. carries out or may carry out business in the future, the availability of future business opportunities and the ability to successfully integrate acquisitions or operational difficulties related to technical activities of mining and reclamation, the speculative nature of exploration and development of mineral deposits located, including risks in obtaining necessary licenses and permits, adverse changes in credit ratings, and the challenge of title. Mammoth Resources Corp. does not undertake an obligation to update publicly or revise any forward-looking statements or information, whether as a result of new information, future events or otherwise, unless so required by applicable securities laws.

Richard Simpson, VP Exploration of Mammoth Resources is Mammoth's Qualified Person/Competent Person related to any technical disclosure given in this presentation.

Notes * to information in this presentation can be found on Mammoth's website: mammothresources.ca, 'Investors' section, 'Presentations'.

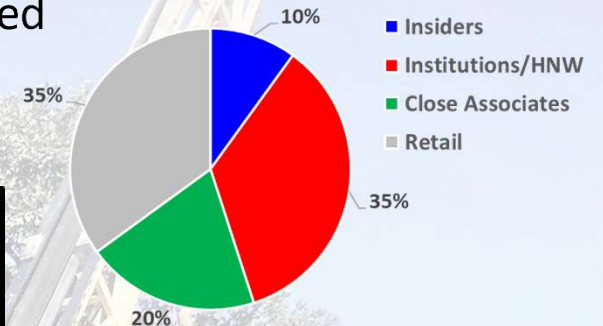


Valuation/Trading

Attractive Capital Structure - Compelling Valuation

67.1 million basic shares outstanding / 71.5 million fully diluted

Shares are held **10%** by insiders, **35%** by institutions/HNW individuals and **20%** by close associates.



- Last financing: June/21 \$2,850,000 @\$0.14/share
- Recent Market Cap: C\$1.3 million

Mammoth's current market capitalization values the company at only 20% of what's been spent on its Tenoriba property



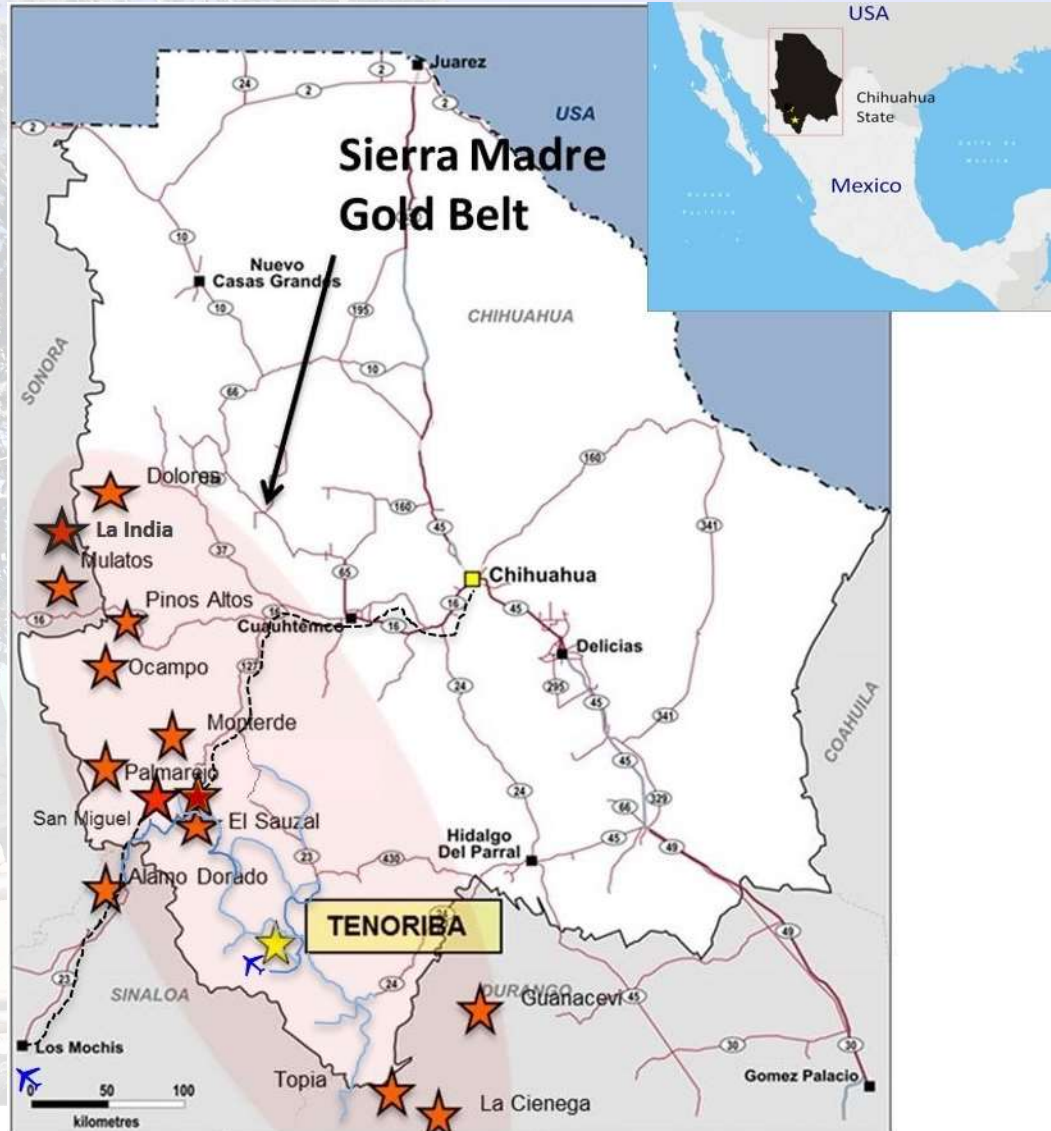
TENORIBA PROJECT OVERVIEW

- **Mammoth** owns a 100% interest in the *Tenoriba*, High Sulphidation, gold-silver project (subject to a 2% NSR royalty purchasable for US\$1.5M 2 years into commercial production).
- **5,333 hectare** property (13 km x 4 km) in the *Sierra Madre southwestern Chihuahua State, Mexico*.
- **Large 18 sq km** (6 km x 3 km / 4,500 football fields) **gold-silver footprint** - highest gold-silver sample graded **74 g/t gold** plus **62 g/t silver**.
- **C\$6.5 million** spent on Tenoriba to date, including: **55 diamond drills holes / 7,500 m** testing areas along a **4 km trend** to 150 m depth, **48** of which are **potentially economical: 24.7 m grading 4.0 g/t gold to 126.8 m grading 0.52 g/t gold, average grade of 0.65 g/t gold Equivalent (Eq)***
- Mineralization appears amenable to low-cost **open pit mining** (abundant surface mineralization) and **heap leaching processing** (free gold/oxidized).
- Imminent opportunity to define a greater than **1 million gold Eq ounce Exploration Target** at a cost of as low as **US\$1.50/ounce gold Eq**.

* Gold Equivalent (Eq) where silver converted to gold at ratio of 75:1



Tenoriba - Located in Prolific Gold-Silver Region



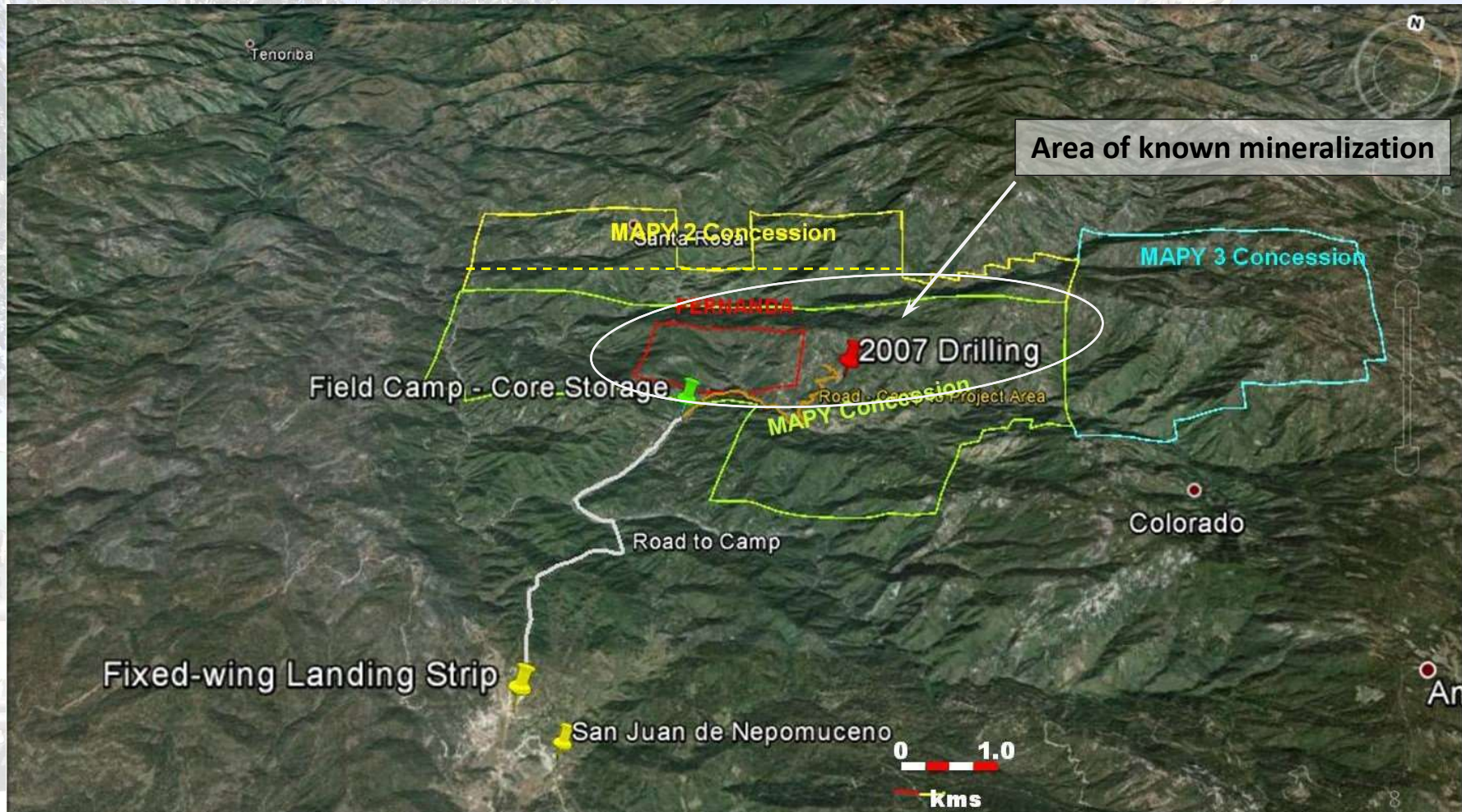
In the 20 yr period 1995 - 2015 numerous deposits have been discovered in the Sierra Madre.

- Dolores - Pan American Silver
- Mulatos - Alamos Gold
- Pinos Altos - Agnico Eagle
- Ocampo - Aurico Gold
- Monterde - Kimber Resources
- San Miguel - Paramount Gold
- El Sauzal - Goldcorp (Newmont)
- Palmarejo - Coeur Mining
- Alamo Dorado - Pan American Silver
- Guanacevi - Endeavour Silver
- Topia - Great Panther
- La India - Agnico Eagle

Mammoth's Tenoriba project is surrounded by numerous multi-million ounce deposits owned by multi-billion \$ market value companies

Tenoriba Project - Location and Infrastructure

- **100%** interest in 4 concessions covering **5,333 hectares**.
- Exploration focused on 3 areas of gold-silver mineralization over a 6 km strike length.

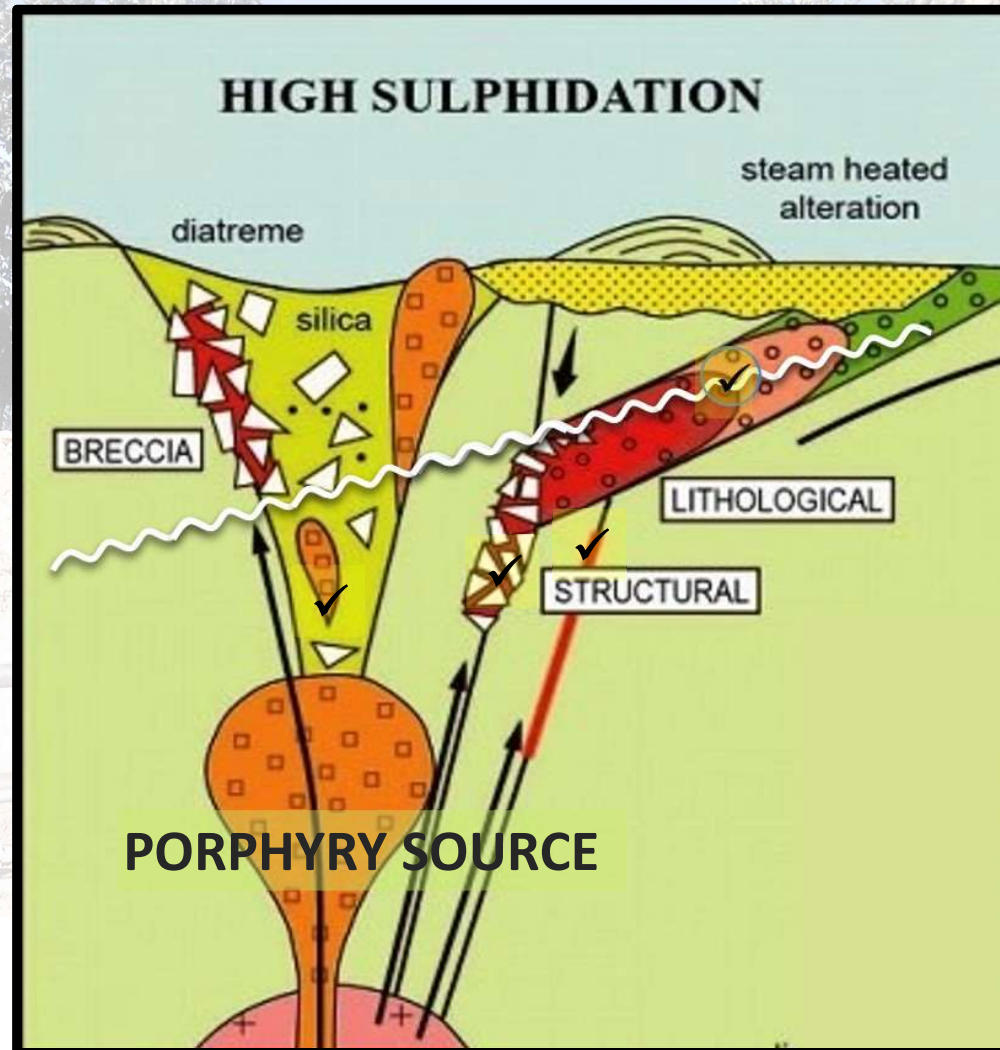


Tenoriba Project - High Sulphidation Setting

Tenoriba has characteristics common to High Sulphidation systems in the Sierra Madre* - *Mulatos: 6.2M ozs, La India: 1.4 M ozs, El Sauzal: 2.0 M ozs*

Tenoriba Features

- Felsic volcanics (dacitic, lithic crystal tuff, breccia-vuggy silica and porphyry)
- Advanced Argillic alteration
- Dickite-Kaolinite



**Confirmed by
2021 - PhD
geologist
review of
historical
data/site visit**

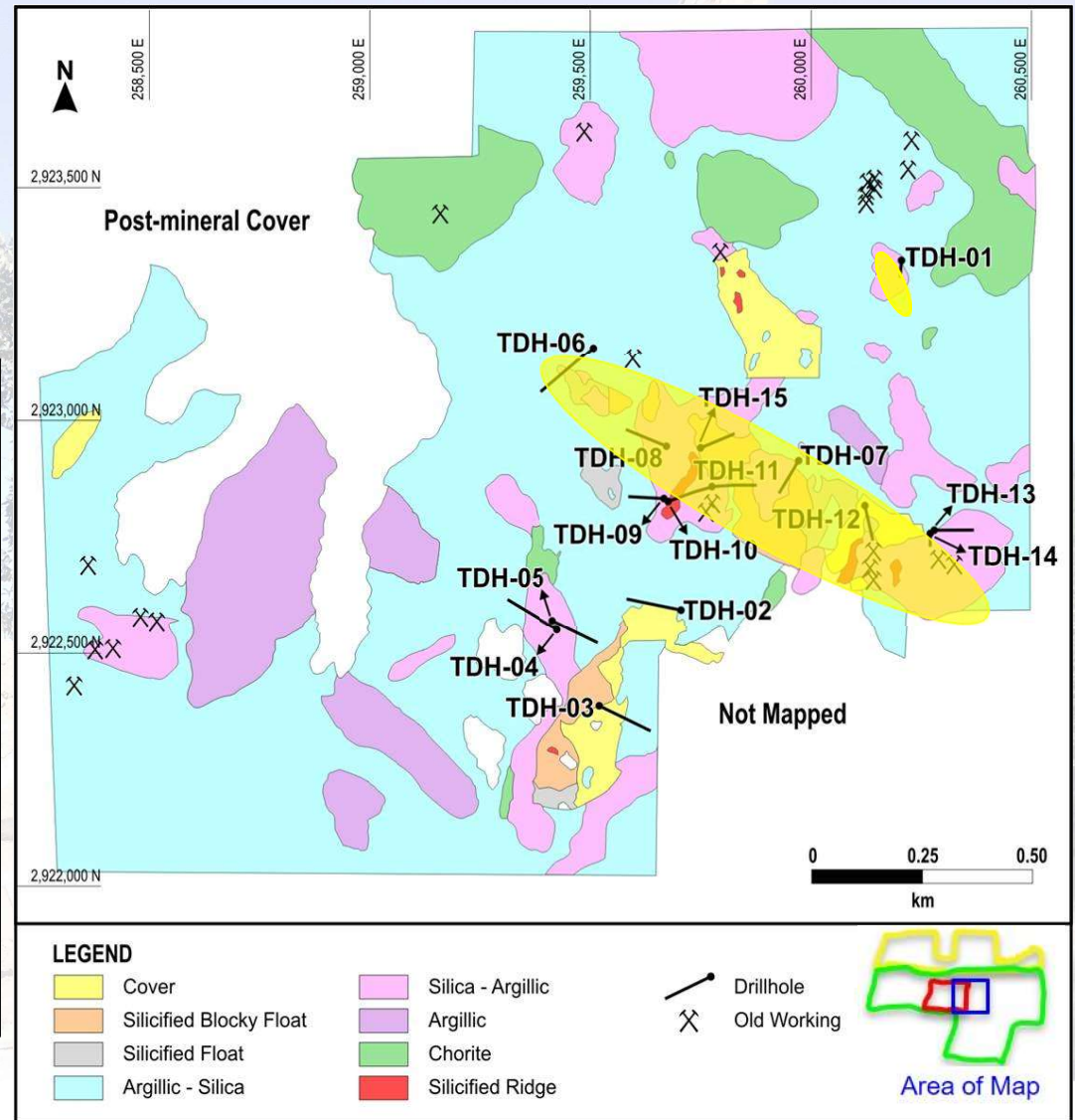
* Refer to "References" page at the end of the presentation



HISTORICAL EXPLORATION - First phase of drilling

- Phase 1 - 15 hole diamond drill program completed in 2008*
- Potentially economical grades over attractive widths intersected in 10 of 15 holes drilled

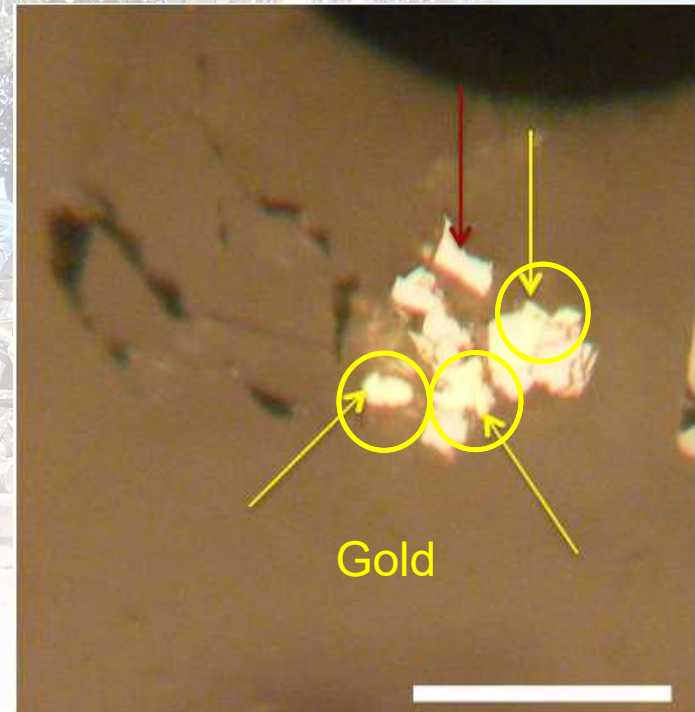
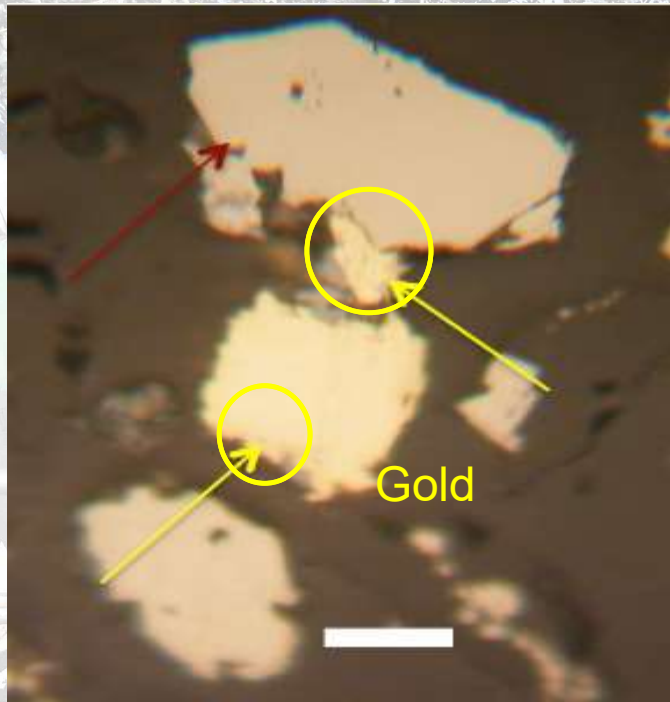
| Drill Hole Number | From (metres) | To (metres) | Interval Length (metres) | Gold (Fire Assay) (gpt) |
|-------------------|------------------|----------------|-----------------------------|-------------------------------|
| TDH-01 | 3.50 | 14.70 | 11.20 | 0.54 |
| TDH-07 | 35.00 | 51.00 | 16.00 | 0.49 |
| | 61.00 | 64.70 | 3.70 | 5.33 |
| (including) | 62.80 | 64.70 | 1.90 | 45.90 |
| | 120.50 | 132.00 | 11.50 | 2.26 |
| (including) | 129.50 | 132.00 | 2.50 | 9.21 |
| TDH-11 | 27.30 | 67.00 | 39.70 | 0.48 |
| (including) | 40.80 | 49.00 | 8.20 | 1.45 |
| | 110.00 | 144.40 | 34.40 | 1.03 |
| (including) | 116.80 | 124.20 | 7.40 | 2.82 |
| (including) | 135.00 | 144.40 | 9.40 | 1.37 |
| TDH-12 | 21.00 | 46.60 | 25.60 | 0.56 |
| TDH-14 | 4.00 | 70.00 | 66.00 | 0.50 |
| TDH-15 | 50.00 | 62.00 | 12.00 | 0.64 |



Note: Drill intersection lengths are not "true thickness", but rather core length intersections. It is possible that true thickness could be less than the reported core-length intervals. For further information on these drill holes please consult Sedar.com, Masuparia Gold June 30, 2008 Press Release.

MAMMOTH EXPLORATION - Prelim Metallurgy

- Heavy metal separation/microscope analysis indicating **gold occurring as free gold** - on the surface and/or along fractures within sulfides.
- Collected samples from various depths/drill holes to perform **bottle roll tests** which showed **excellent recovery of gold** (100% in 24 hours)
- Gold recovery could be amenable to **low cost heap leach processing**



MAMMOTH EXPLORATION - Mapping & Sampling

>600 chip samples (minimum 1.5 m) with gold-silver concentrated in 3 principle areas along a 5 km east-west trend, open to the east and west

1. Los Carneritos

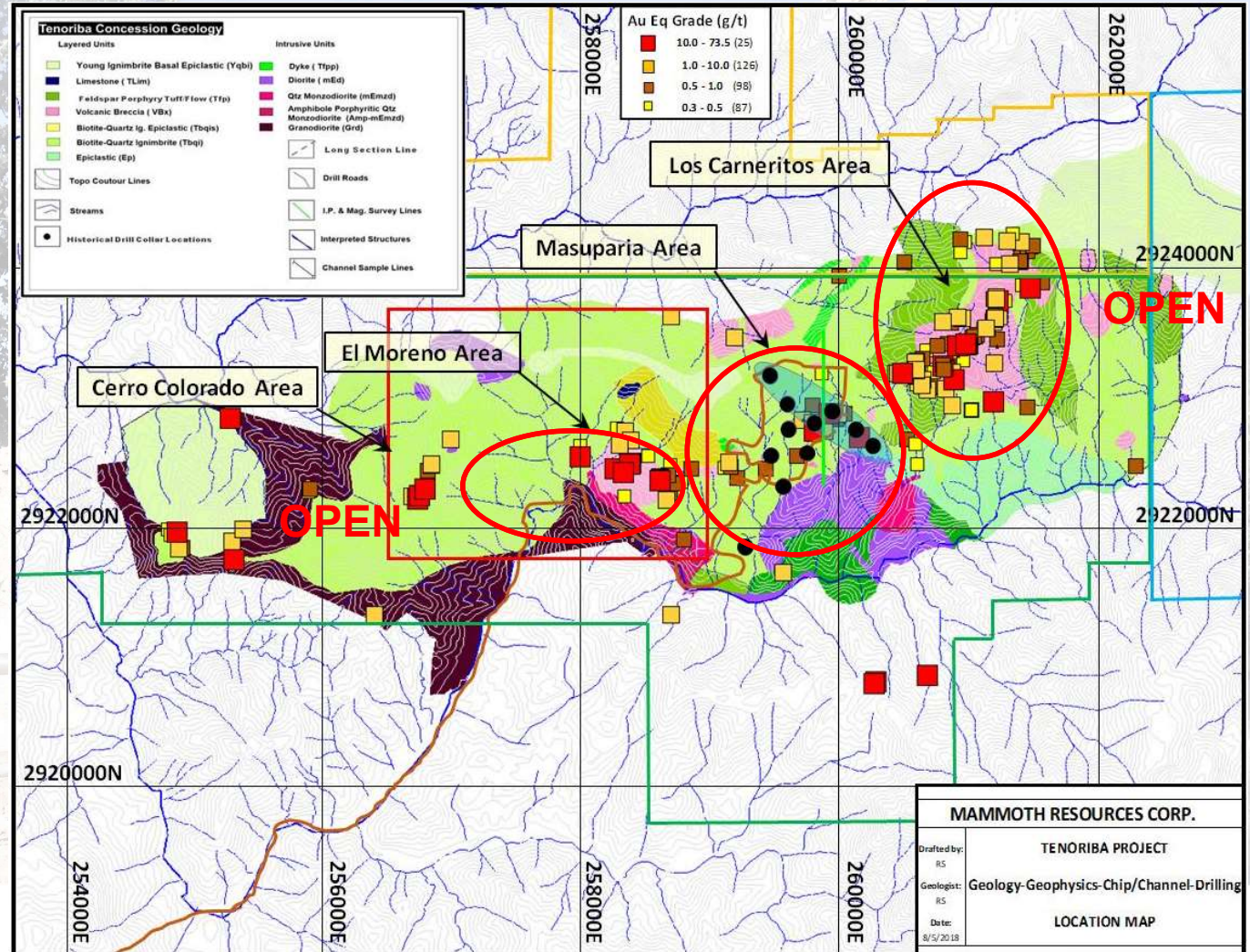
(1.5 x 0.75 km)
Of 146 samples assayed, 74% (115 samples) assayed >0.3 g/t gold and an average grade of 1.56 g/t gold

2. Masuparia

(1.5 x 1.5 km)

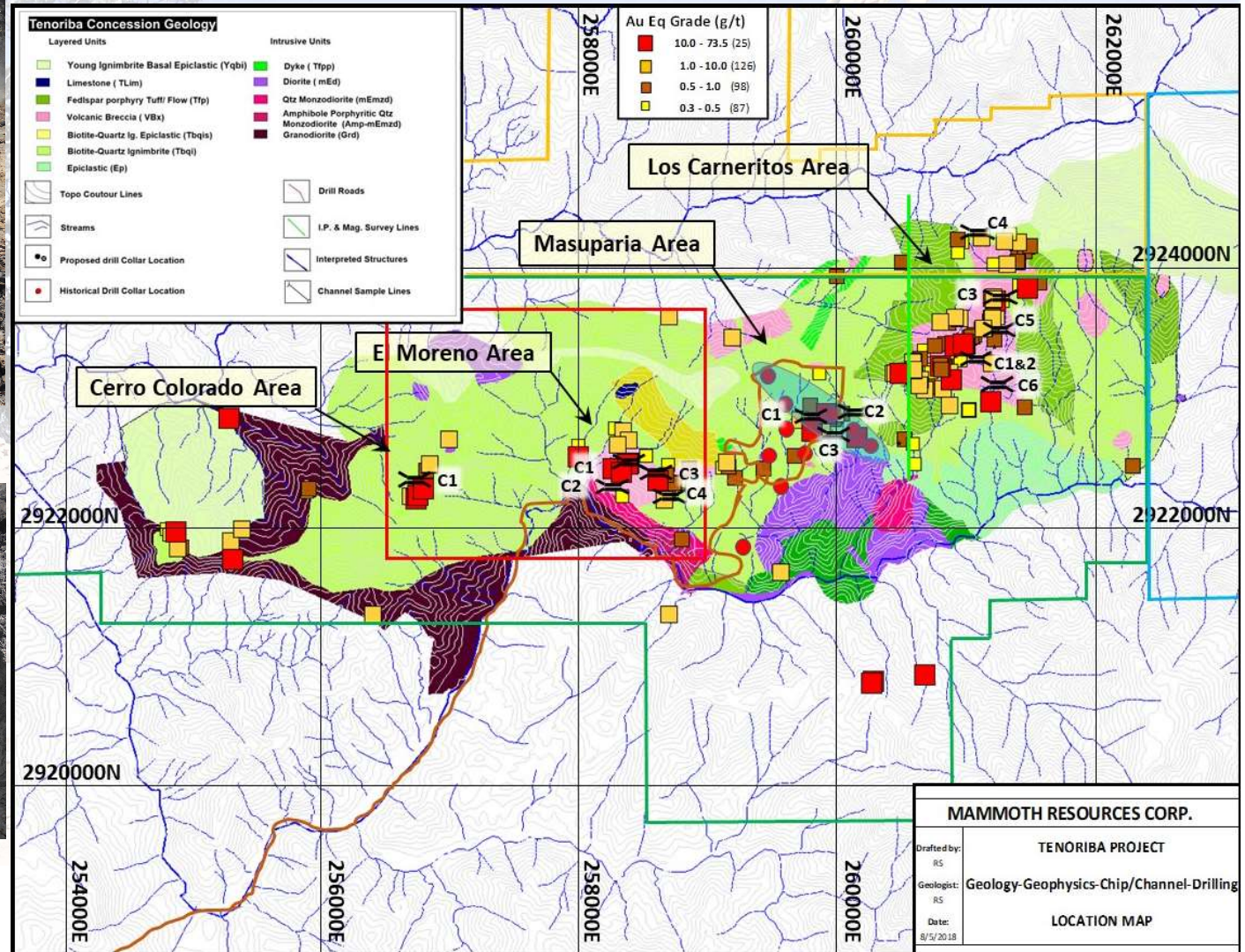
3. El Moreno

(1.5 x 1.0 km)
Of 148 samples assayed, 41%, (56 samples) assayed >0.3 g/t gold and an average grade of 2.55 g/t gold



MAMMOTH EXPLORATION - Channel Sampling

- 14 channels were cut for a total of 151 metres along 5 km of strike



Channel Sample Results

| <u>Location</u> | <u>Sample Numbers</u> | <u>Channel Width</u> (m) | <u>True Width</u> (m) | <u>Weighted Average Gold Grade</u> (g/t) | <u>Weighted Average Silver Grade</u> (g/t) | <u>Weighted Average Gold Equivalent*</u> (g/t) |
|------------------------|-------------------------------------|-----------------------------|--------------------------|---|---|---|
| El Moreno 1 | 330732 to 330740 | 13.6 | 11.5 | 0.64 | 2.5 | 0.67 |
| El Moreno 2 | 330789 to 330800 | 16.5 | 16.0 | 0.38 | 4.3 | 0.44 |
| El Moreno 3 | 330656 to 330659 | 6.0 | 5.0 | 0.28 | 0.6 | 0.29 |
| El Moreno 4 | 330685 to 330673 | 12.0 | 11.0 | 0.23 | 9.7 | 0.36 |
| Carneritos 1 | 330743 to 330750 & 330754 to 330756 | 15.7 | 15.5 | 0.99 | 6.1 | 1.07 ★ |
| Carneritos 2 | 330757 to 330761 | 7.4 | 7.0 | 1.28 | 8.2 | 1.36 ★ |
| Carneritos 3 | 330762 to 330770 | 13.5 | 13.5 | 1.50 | 3.4 | 1.55 ★ |
| Carneritos 4 | 330695 to 330700 & 330801 | 10.0 | 10.0 | 0.42 | 7.2 | 0.51 |
| Carneritos 5 | 330802 to 330811 | 11.9 | 11.9 | 0.05 | 0.01 | 0.08 ← |
| Carneritos 6 | 330812 to 330816 | 6.2 | 6.2 | 0.88 | 4.4 | 0.94 ★ |
| Masuparia 1 | 330677 to 330685 | 13.1 | 13.1 | 0.66 | 0.9 | 0.67 |
| Masuparia 2 | 330689 to 330694 | 6.4 | 6.4 | 0.47 | 10.0 | 0.61 |
| Masuparia 3 | 330819 to 330826 | 12.0 | 9.7 | 0.11 | 1.0 | 0.12 ← |
| Cerro Colorado | 330827 to 330831 | 6.8 | 6.4 | 0.54 | 1.9 | 0.57 |
| TOTAL LENGTH: | | 151.1 | WEIGHTED | AVERAGE | GRADE: | 0.66 |
| TOTAL LENGTH**: | | 129.0 | WEIGHTED | AVERAGE | GRADE: | 0.77 |

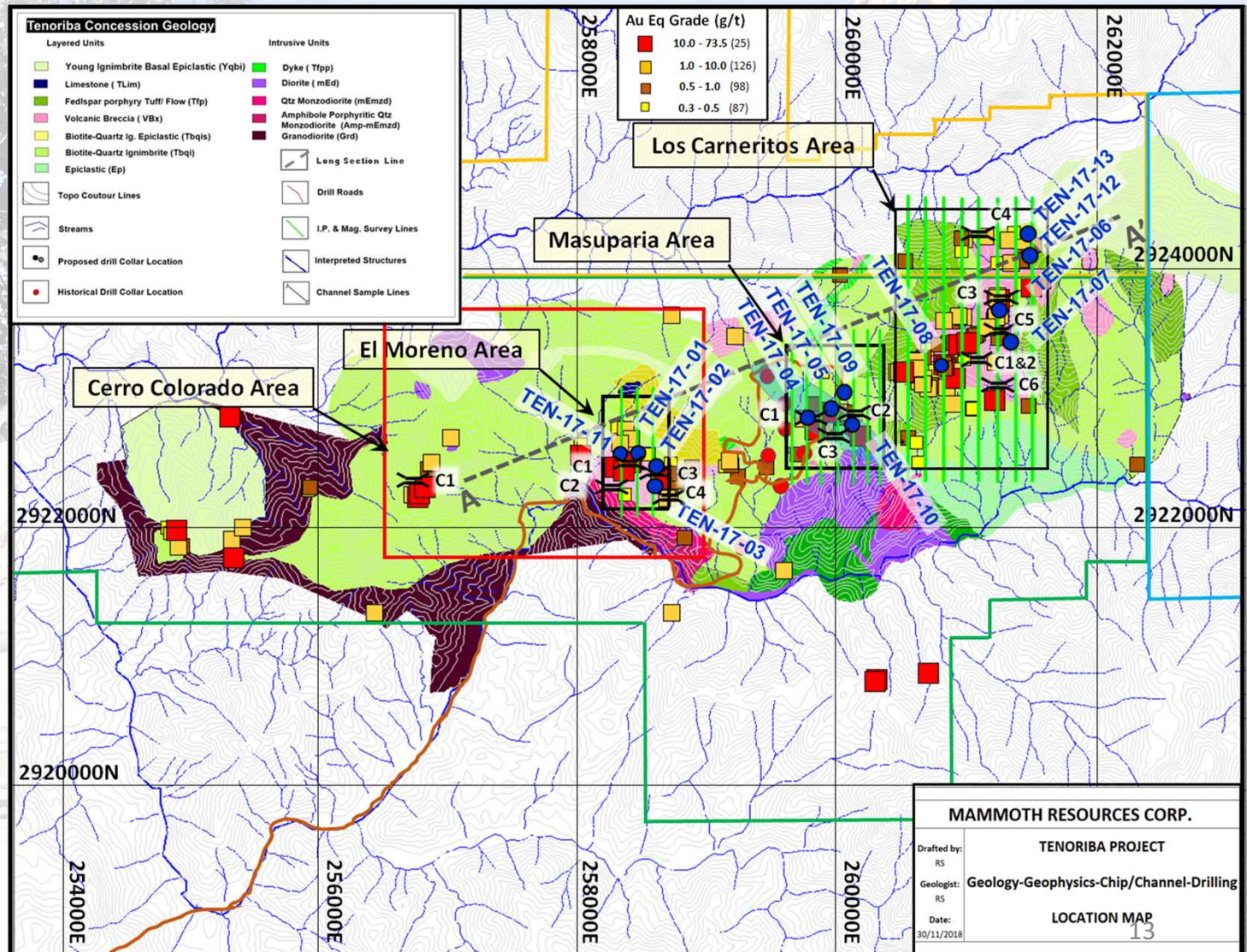
Any gold samples assaying greater than 10 g/t gold were reduced ("cut") to 10 gpt gold in any averaging.

* Gold Equivalent wherein silver grade is converted to gold grade at 75 g/t silver = 1 g/t gold.

** After eliminating low grade channels; Carneritos 5 and Masuparia 3

MAMMOTH EXPLORATION - Diamond Drilling

8 of 11 targets tested, diamond drilling assayed potentially economical gold mineralization over 10's of metres.

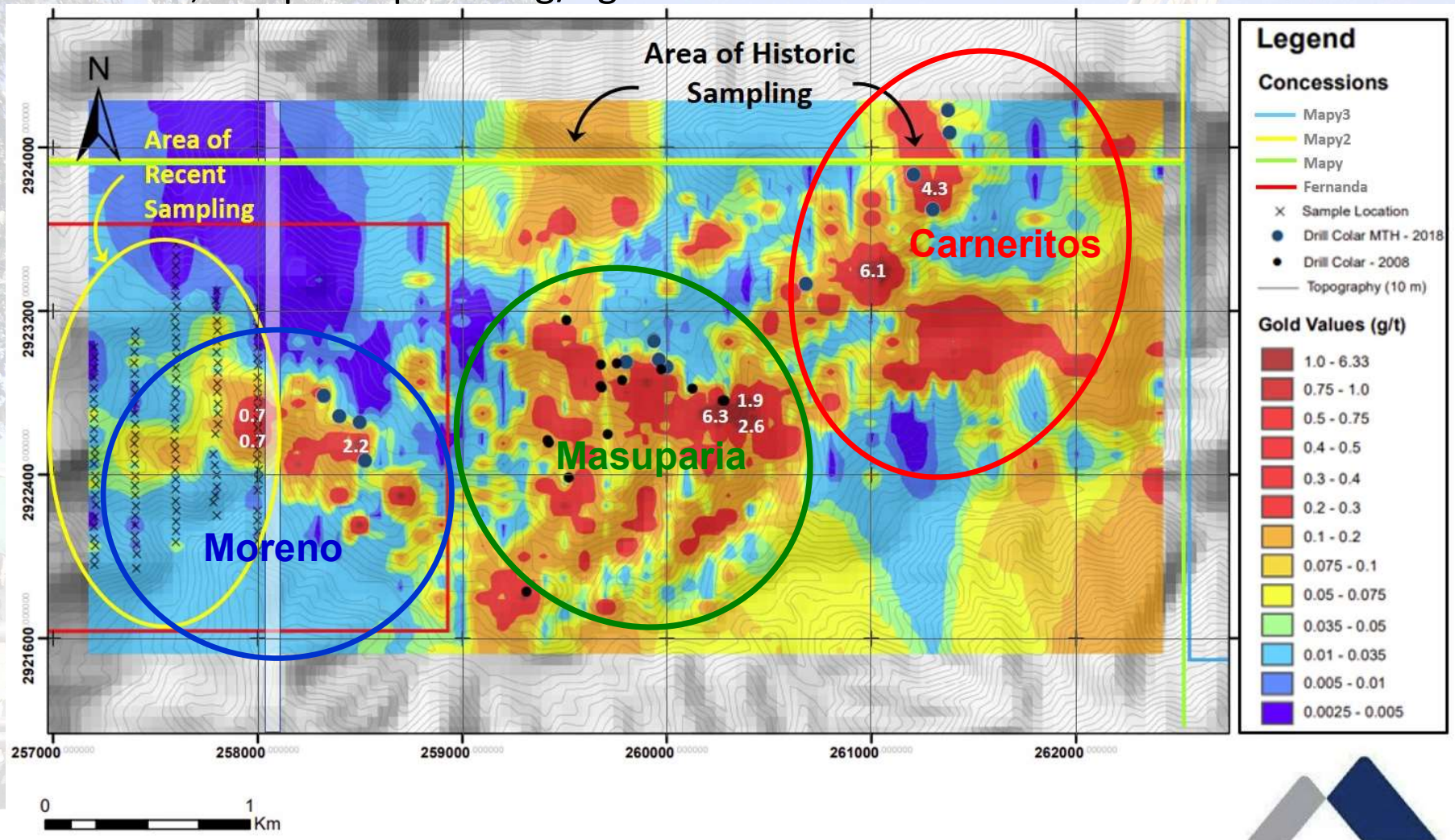


Highlight Drill Intervals

| <u>Location</u> | <u>Hole Number</u> | <u>From</u> (m) | <u>To</u> (m) | <u>Total</u> (m) | <u>Weighted</u> <u>Avg Gold</u> <u>Grade</u> (g/t) | <u>Weighted</u> <u>Avg Silver</u> <u>Grade</u> (g/t) | <u>Weighted</u> <u>Avg Copper</u> <u>Grade</u> (%) | <u>Weighted</u> <u>Avg</u> <u>Gold Equivalent*</u> <u>Grade</u> (g/t) |
|-----------------|--------------------|--------------------|------------------|---------------------|---|---|---|---|
| El Moreno | TEN 17 -01 | 169.0 | 209.0 | 40.0 | 0.77 | 2.0 | | 0.79 |
| | (including) | 198.5 | 204.5 | 5.9 | 3.41 | 7.2 | | 3.51 |
| | TEN 17 -03 | 85.0 | 92.2 | 7.2 | 0.23 | 36.3 | 3.59 | 4.34 |
| Masuparia | TEN 17 -04 | 0.0 | 10.0 | 10.0 | 1.12 | 1.3 | | 1.13 |
| | (including) | 45.1 | 90.5 | 45.4 | 0.53 | 6.6 | | 0.63 |
| | (including) | 45.1 | 59.8 | 14.7 | 0.61 | 16.7 | | 0.86 |
| | (including) | 72.5 | 90.5 | 18.0 | 0.78 | 2.4 | | 0.83 |
| | TEN 17 -05 | 28.0 | 55.0 | 27.0 | 0.51 | 8.9 | | 0.63 |
| | (including) | 46.6 | 55.0 | 8.4 | 1.30 | 6.6 | | 1.39 |
| | (including) | 70.0 | 93.5 | 23.5 | 1.30 | 1.6 | | 1.32 |
| | (including) | 83.5 | 93.5 | 10.0 | 2.89 | 3.2 | | 2.93 |
| | (including) | 86.5 | 92.0 | 5.5 | 4.92 | 5.1 | | 4.99 |
| | TEN 17 -10 | 25.5 | 30.0 | 4.5 | 0.42 | 7.9 | | 0.52 |
| Carneritos | (including) | 33.0 | 37.5 | 4.5 | 0.45 | 2.6 | | 0.48 |
| | (including) | 58.5 | 81.0 | 22.5 | 0.35 | 4.3 | | 0.40 |
| | (including) | 144.5 | 147.5 | 3.0 | 1.31 | 50.3 | | 1.99 |
| | (including) | 159.5 | 162.5 | 3.0 | 0.65 | 5.5 | | 0.72 |
| | (including) | 170.0 | 194.0 | 24.0 | 0.31 | 3.7 | | 0.36 |
| | TEN 17 -06 | 43.7 | 170.5 | 126.8 | 0.47 | 7.2 | | 0.52 |
| | (including) | 70.7 | 129.0 | 58.2 | 0.73 | 3.9 | | 0.80 |
| | (including) | 70.7 | 95.7 | 25.0 | 1.10 | 2.7 | | 1.21 |
| | (including) | 95.7 | 111.0 | 15.0 | 0.51 | 0.4 | | 0.54 |
| | TEN 17 -08 | 52.5 | 62.4 | 14.9 | 0.58 | 3.1 | | 0.62 |

2021 Gold in Soil Extension

Extension of gold in soil anomaly - 1 km extension increasing gold-in-soil footprint to 5.5 km, sampled up to 6.3 g/t gold **IN SOIL**.*



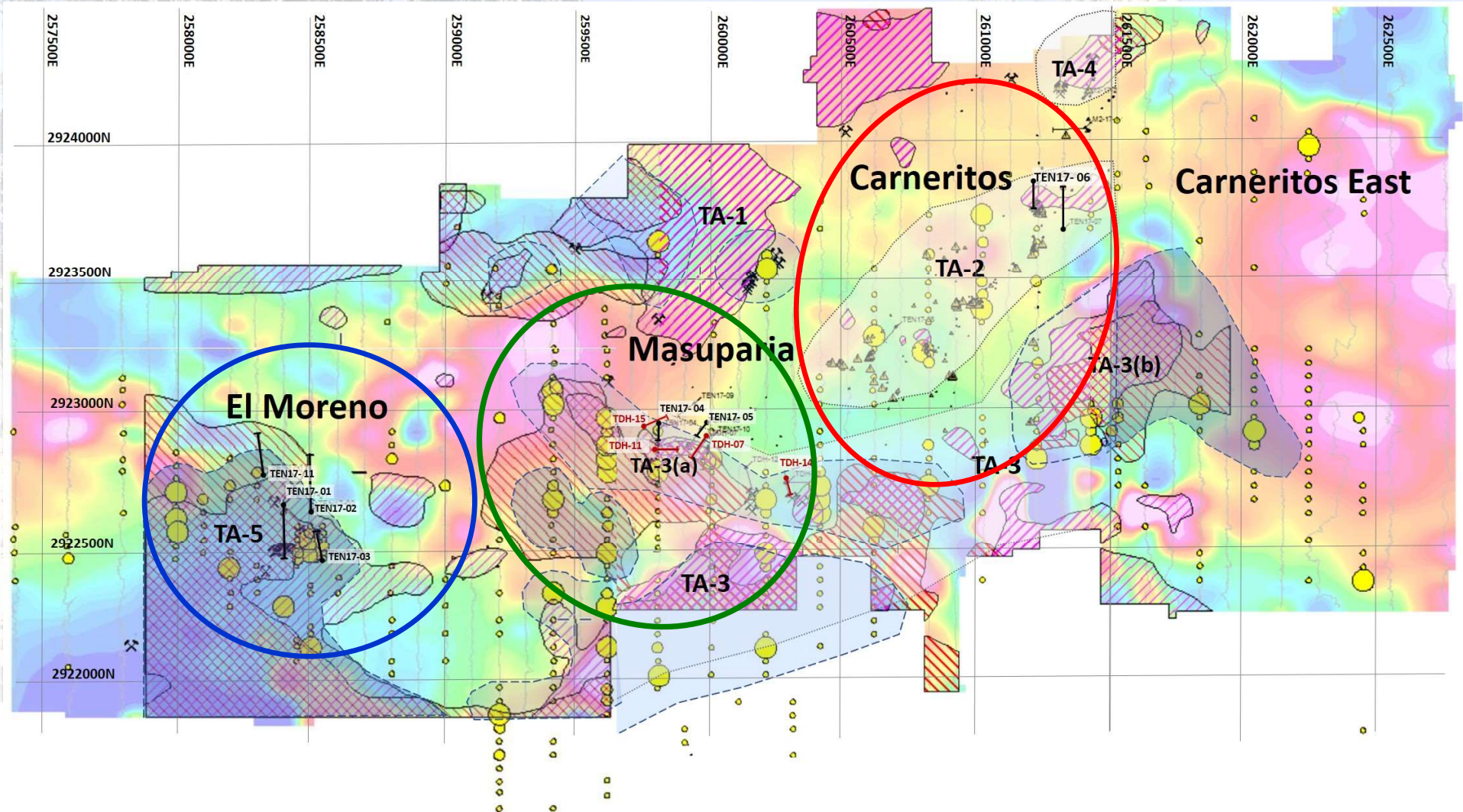
1:25,000

MAMMOTH RESOURCES CORP.



2021 Infill Geophysics

63 km in-fill geophysics survey (I/P & Mag) with 3D modelling identified 5 TARGET AREAS over 4 km of a 6 km trend - attractive geophysics features are coincident with prior drilling, surface soil, chip and channel samples.

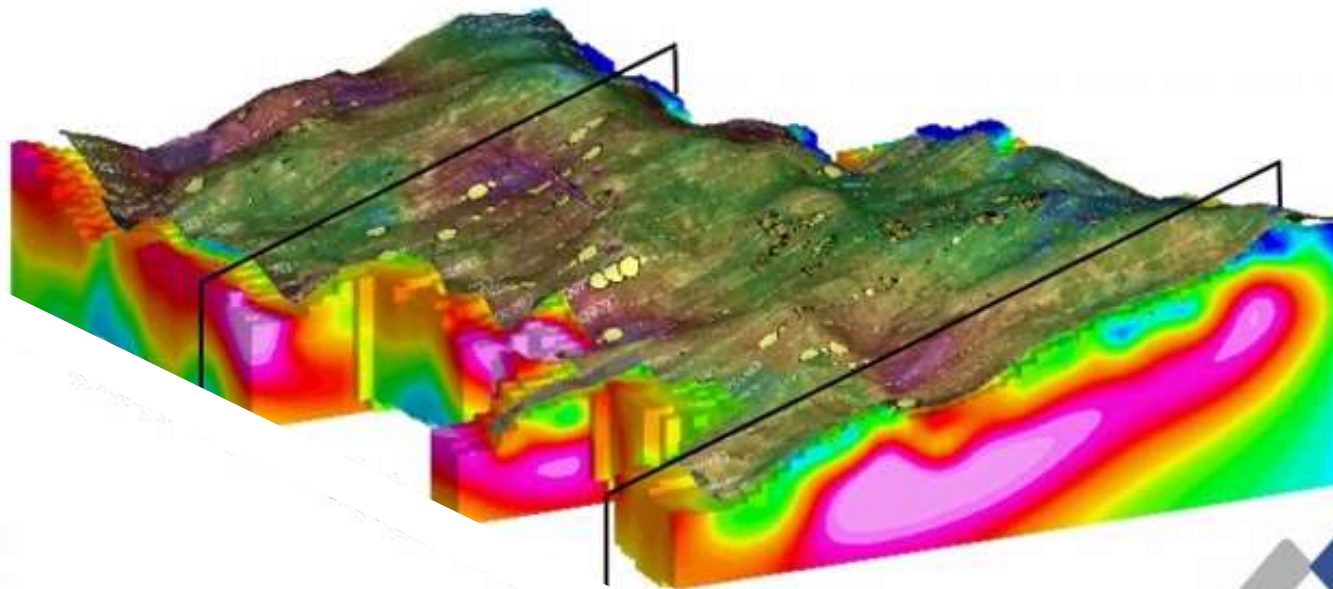


2021 Infill Geophysics - 3D modelling

Below surface areas coloured orange through red to pink indicate features attractive for hosting gold-silver mineralization.

TENORIBA ANIMATED 3D CROSS SECTIONAL VIEW

(VIEW LOOKING NORTHWEST)



MAMMOTH RESOURCES

TSX-V: MTH

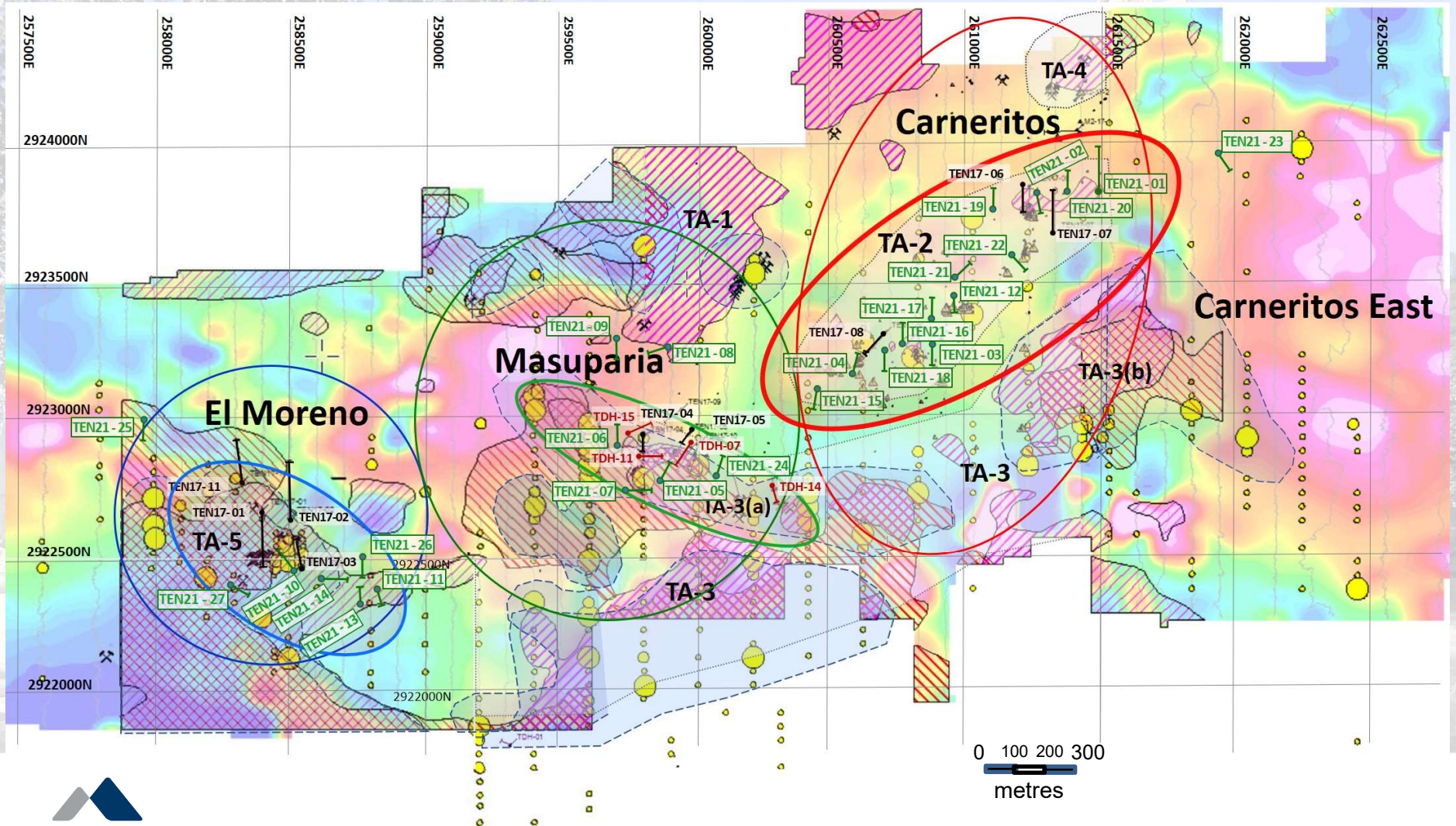
www.mammothresources.ca



MAMMOTH RESOURCES CORP.

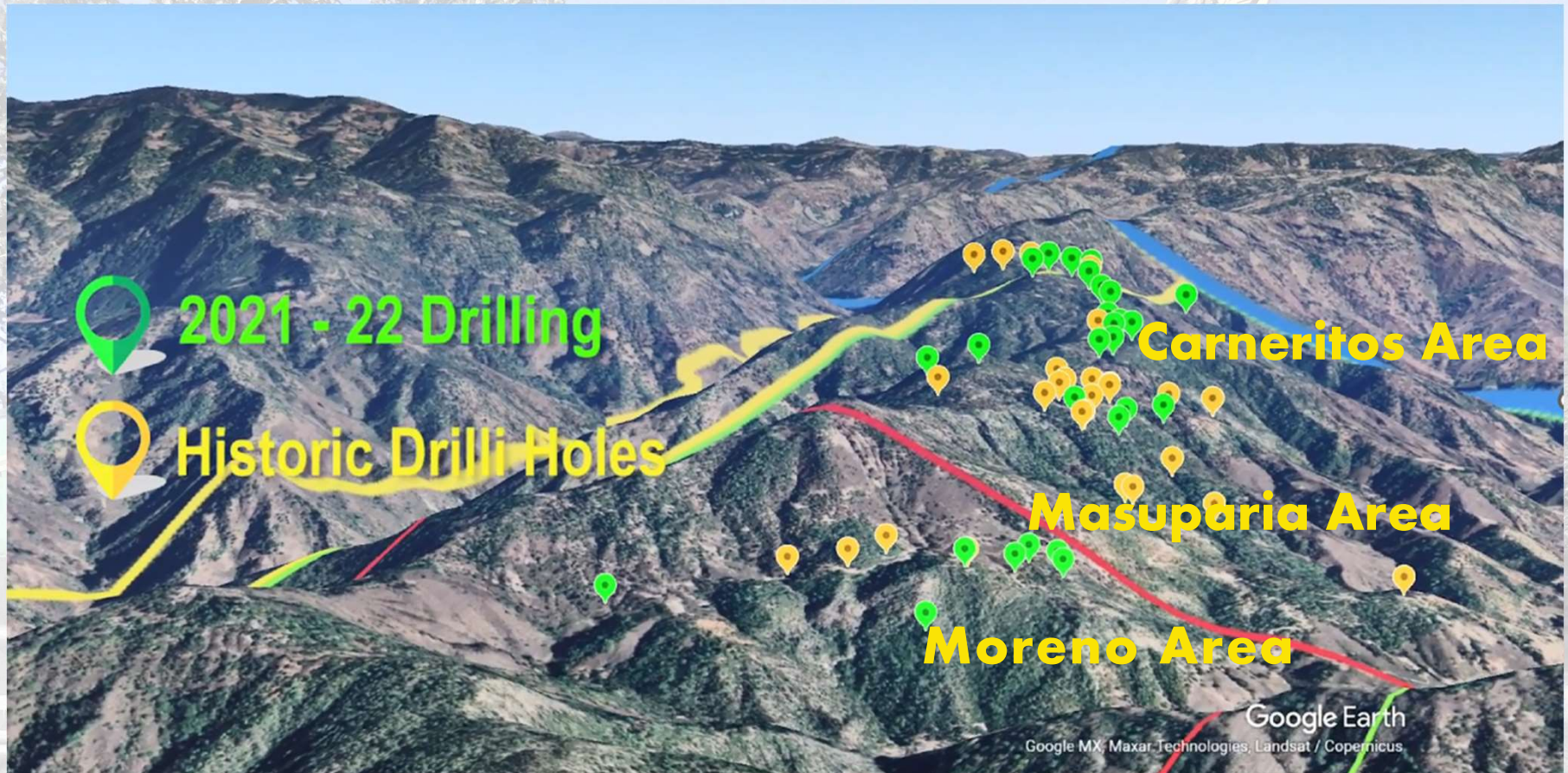
2021 - 22 Drill Hole Locations

2021-22, 27 hole / 3,300 m diamond drill program - 10's of metres of potentially economical gold-silver mineralization blocking-out 3 large areas.



2021 - 22 Drill Hole Locations

Panoramic view of drill hole locations over Tenoriba Project terrain
(Google Earth image, looking east).



2021 Highlight Drill Intervals

Potentially economical gold-silver mineralization in >85% of all holes drilled - weighted average grade = 0.65 g/t Au Eq over average 37.5m interval

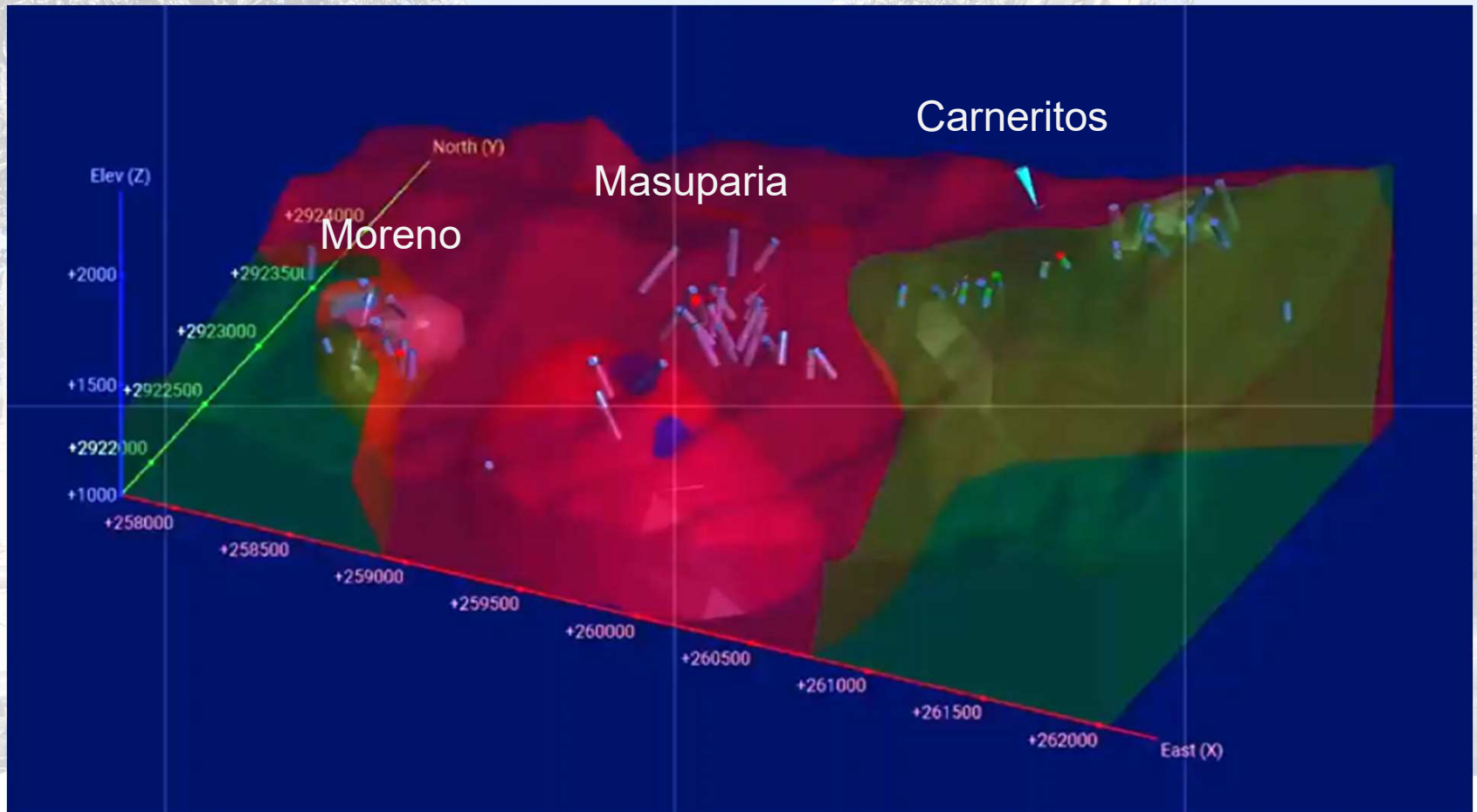
| <u>Location</u> | <u>Hole Number</u> | <u>From</u> (m) | <u>To</u> (m) | <u>Total</u> (m) | <u>Weighted Average Gold Grade</u> (g/t) | <u>Weighted Average Silver Grade</u> (g/t) | <u>Weighted Average Copper Grade</u> (%) | <u>Weighted Average Gold Equivalent*</u> (g/t) |
|-----------------|--------------------|--------------------|------------------|---------------------|---|---|---|---|
| Carneritos | TEN 21-01 | 7.5 | 45.0 | 37.5 | 0.31 | 17.1 | | 0.53 |
| | TEN 21-03 | 0.0 | 43.5 | 43.5 | 0.54 | 3.6 | | 0.59 |
| | TEN 21-12 | 4.5 | 51.0 | 46.5 | 0.45 | 5.1 | | 0.51 |
| | TEN 21-15 | 24.0 | 54.0 | 30.0 | 0.52 | 8.4 | | 0.63 |
| | TEN 21-16 | 0.0 | 12.0 | 12.0 | 0.60 | 0.7 | | 0.61 |
| | (plus) | 24.0 | 102.2 | 85.7 | 0.44 | 2.3 | | 0.47 |
| | TEN 21-17 | 0.0 | 33.0 | 33.0 | 0.60 | 2.8 | | 0.64 |
| | TEN 21-18 | 0.0 | 81.0 | 81.0 | 0.45 | 2.3 | | 0.48 |
| | TEN 21-21 | 0.0 | 48.0 | 48.0 | 1.11 | 7.4 | | 1.21 |
| Masuparia | TEN 21-06 | 0.0 | 18.0 | 18.0 | 1.21 | 1.5 | | 1.23 |
| | TEN 21-24 | 52.5 | 91.5 | 39.0 | 1.14 | 5.4 | | 1.22 |
| Moreno | TEN 21-13 | 0.0 | 37.5 | 37.5 | 0.98 | 15.1 | | 1.18 |
| | (including) | 10.5 | 28.5 | 18.0 | 1.13 | 21.4 | 0.55 | 2.34 |

* Gold Equivalent where silver is converted to gold at 75 g/t silver = 1 g/t gold = 13.0 lbs copper.

2022 Drill Program Follow up

Third party resource expert assessed drill spacing for a maiden *Inferred* resource.

- Moreno & Carneritos - 80 m
 - Masuparia - 40 m
- } ~100 - 150 drill holes to 50 m depth = maiden resource



Tenoriba Exploration Target

Employing all historical drill results, Mammoth geologists studied the *Exploration Target* (gold-silver mineral resource potential) at Tenoriba.

- Initial Target within *surface to shallow oxidized-mixed mineralized horizon* for open pit - heap leach potential
- Separate study of *deeper sulfide horizon*.
- Surface area boundaries based on geology, presence of gold and geophysics.
- Average grade and estimated interval thickness based on drill data.

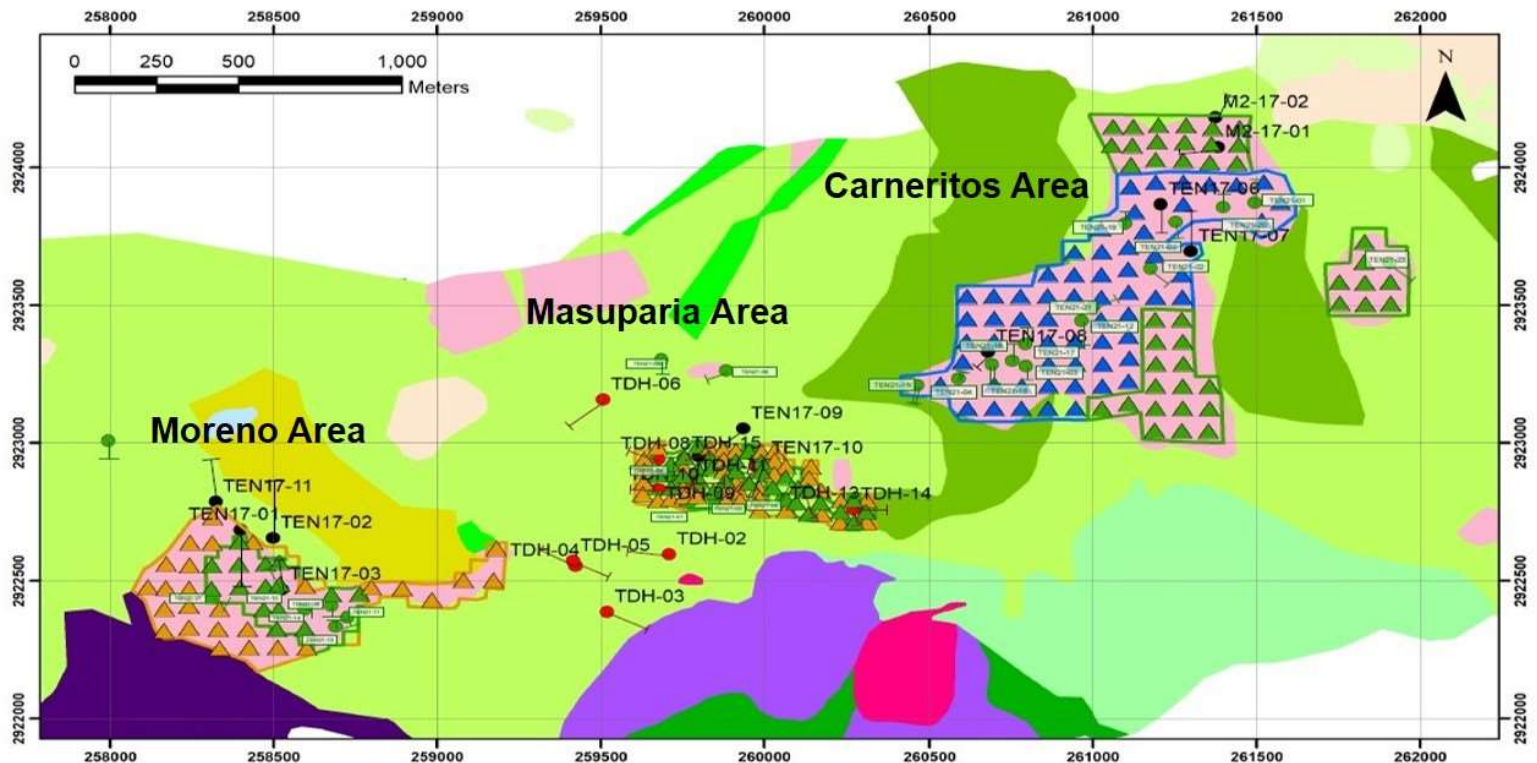
1.69 to 1.88 million oz gold Eq (gold + silver) Exploration Target was identified in the three principle gold-silver mineralized areas at Tenoriba.

| Exploration Target - All Three Areas, All Three Phases of Drilling | | | |
|--|--------------------|----------------|-------------------|
| | <u>OXIDE-MIXED</u> | <u>SULFIDE</u> | <u>COMBINED</u> * |
| Total Surface Area (square m) | 1,200,819 | 1,200,819 | 1,200,819 |
| Total Calculated Tonnage (tonnes) | 53,269,759 | 42,850,160 | 96,119,919 |
| Weighted Average Grade (gold equivalent) | 0.59 | 0.64 | 0.61 |
| TOTAL CALCULATED GOLD EQ OUNCES* | 1,005,953 | 878,229 | 1,878,127 |
| TOTAL ADJUSTED GOLD EQ OUNCES* (90%) | 917,219 | 769,959 | 1,687,178 |



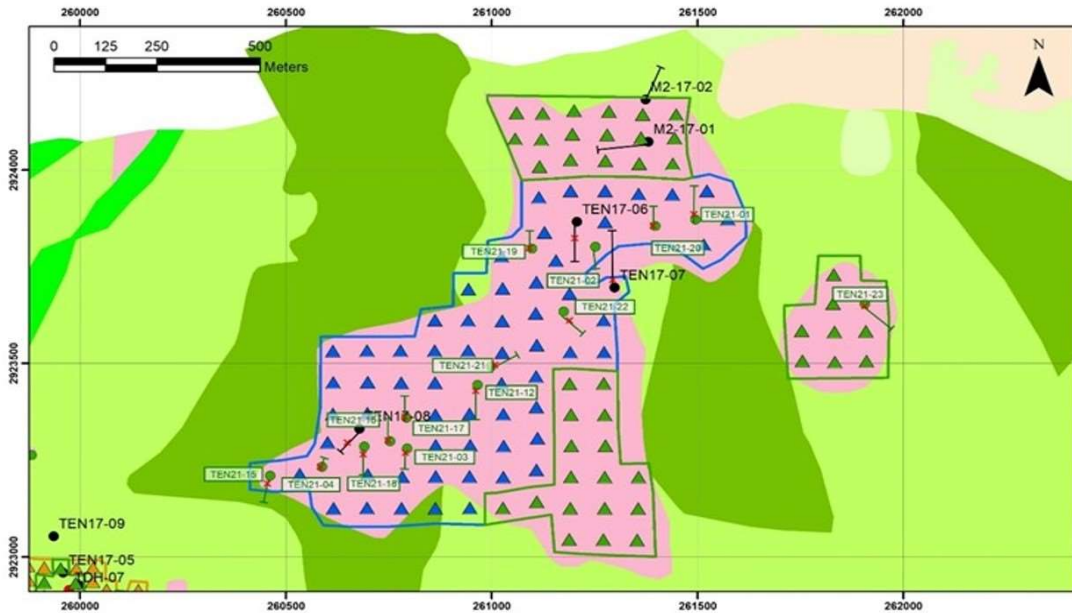
Tenoriba Exploration Target - 3 Principle Areas

Drilling spread among the 3 principle areas of known mineralization over 3 phases of drilling – 163, 50 m drill holes in Phase 1 & 2



Tenoriba Exploration Target - Carneritos Area

Carneritos area drilling - only 5,000 m drilling (100, 50 m depth holes) has the potential of defining up to 800,000 gold Eq ozs in shallow Oxide-Mixed horizon



PHASE 1 DRILLING - CARNERITOS

| | OXIDE-MIXED | SULFIDE |
|--|-------------|------------|
| Surface Area (square m) | 481,638 | 481,638 |
| No. of Mineralized Drill Holes | 15 | 9 |
| No. of Mineralized Drill Intercepts | 18 | 10 |
| Average True Intercept Width (m) | 24.2 | 14.9 |
| Rock Density (tonne/m ³) | 2.4 | 2.4 |
| Calculated Tonnage (tonnes) | 27,973,535 | 17,223,375 |
| Average Grade (gold equivalent) | 0.59 | 0.48 |
| Gram/tonne to Troy oz/tonne Grade Conversion | 31.1 | 31.1 |
| Calculated Gold Eq Ounces | 530,688 | 265,827 |
| Gold Eq Ounces (adjusted for drilling success - 94%) | 498,847 | 249,877 |

PHASE 2 DRILLING - CARNERITOS

| | OXIDE-MIXED | SULFIDE |
|--|-------------|-----------|
| Surface Area (square m) | 267,227 | 267,227 |
| No. of Mineralized Drill Holes | 17 | 9 |
| No. of Mineralized Drill Intercepts | 19 | 12 |
| Average True Intercept Width (m) | 24.4 | 13.0 |
| Rock Density (tonne/m ³) | 2.4 | 2.4 |
| Calculated Tonnage (tonnes) | 15,648,813 | 8,337,482 |
| Average Grade (gold equivalent) | 0.57 | 0.48 |
| Gram/tonne to Troy oz/tonne Grade Conversion | 31.1 | 31.1 |
| Calculated Gold Eq Ounces | 286,811 | 128,681 |
| Gold Eq Ounces (adjusted for drilling success - 94%) | 269,602 | 120,960 |

| | | |
|--------------------------------------|-----------|---------|
| TOTAL CALCULATED GOLD EQ OUNCES | 817,499 | 394,508 |
| TOTAL ADJUSTED GOLD EQ OUNCES (94%) | 768,449 | 370,838 |
| TOTAL CALCULATED GOLD EQ OUNCES* | 1,212,007 | |
| TOTAL ADJUSTED GOLD EQ OUNCES* (94%) | 1,139,287 | |

Phase 1 drill program - 60 holes, 50 m depth
Phase 2 drill program - 42 holes, 50 m depth

Potential for **800,000 gold Eq ounces** in shallow Oxide-Mixed horizon **PLUS Sulfide potential**

Tenoriba Exploration Target - All Areas

3 Phase drilling to outline *Inferred, Oxide-Mixed* (open pit/heap leach) resource all 3 known, mineralized/drilled areas

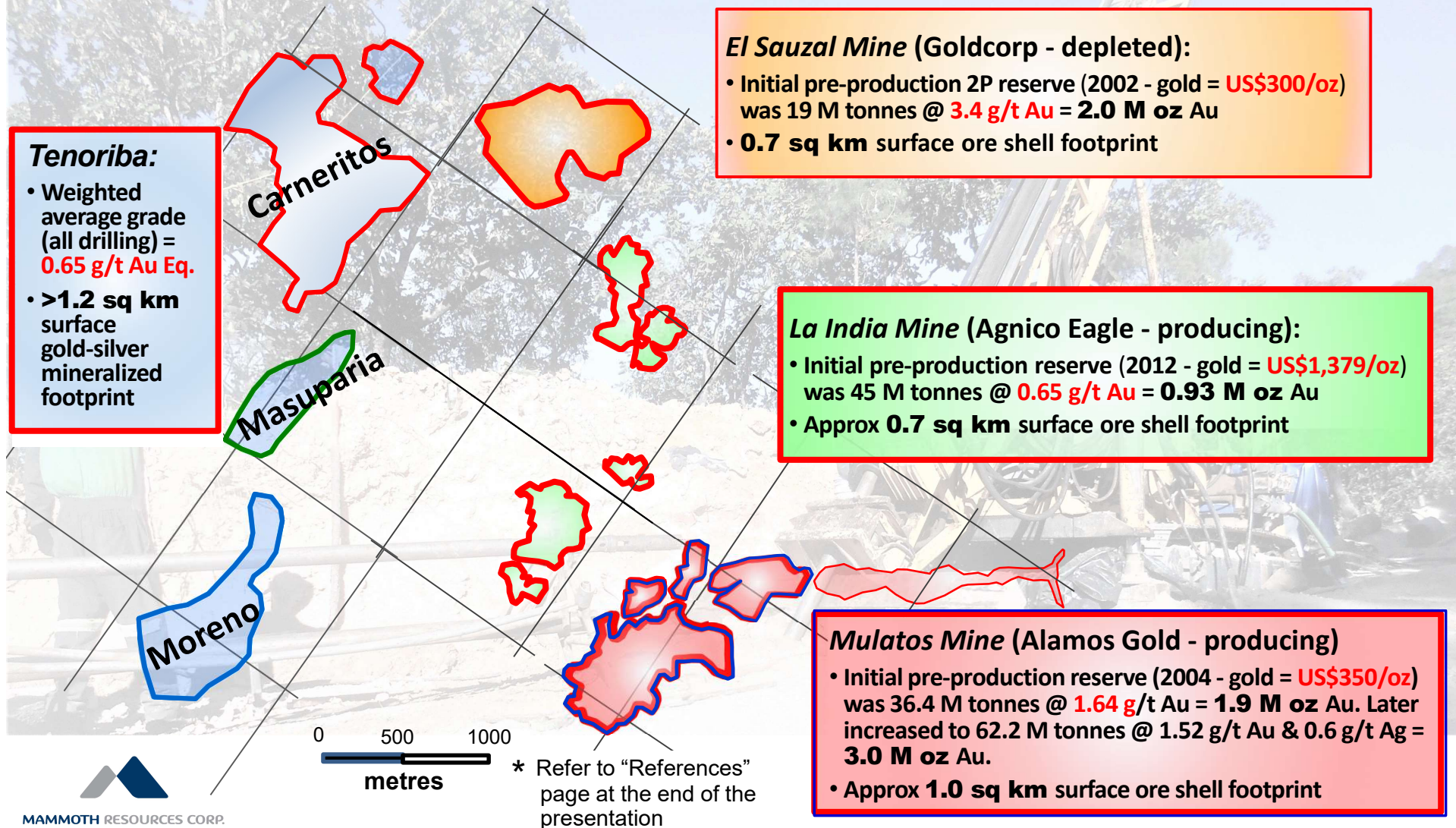
- **Phase 1** - *Carneritos Area* - 60, 50 m depth holes to define potential 530,690 oz gold Eq. **Quoted cost to drill of \$1.50 per Target gold Eq ounce.**
- **Phase 2** - *Carneritos Area* (2nd phase), *Masuparia & Moreno* (1st phase) - 103, 50 m depth holes, potential 381,000 oz gold Eq.
- Combined Phase 1 & 2 drilling = potential 624,160 ozs gold Eq Inferred mineral resource over 153 shallow, 50 m drill holes.

Compelling <\$2.00 per gold Eq ounce cost to define a large >800,000 oz Exploration Target with small investment of 100 shallow drill holes in area where 90% of prior drilling encountered 10's of metres of mineralization.



Comparative Surface Gold Footprints

Tenoriba's gold-silver mineral footprint compares favourably with other >1.0 million ounce *High Sulphidation* deposits in the Sierra Madre of Mexico*.





MAMMOTH RESOURCES CORP.

Corporate Information

Exchange/Symbol: **TSXV: MTH**
52 week hi/low: **\$0.03/0.01**
Shares issued: **67.1M**
Fully diluted: **71.5M**
10 day VWAP: **\$0.20**
Market cap. (basic): **\$1.3M**

Contact Information

Contact Details:

Thomas Atkins, President & CEO
Mammoth Resources Corp.
410 - 150 York Street
Toronto, Ontario
M5H 3S5 Canada

tr_atkins@rogers.com

ph: (416) 509-4326

